

Proud  
to serve

Proud  
of our  
people

Proud to  
improve

Proud  
to lead



---

# *Proud to Protect*

---

PROUD OF WHAT WE DO • PROUD OF WHO WE ARE



Putting  
Victims  
First

# HATE CRIME

BEING YOU  
IS NOT A  
CRIME.  
TARGETING  
YOU IS.



Abuse because of  
**who you are**, whether  
**physical** or **verbal**, is  
a **criminal offence**.

# What is a **Hate Crime** ?

## Hate Crime:

Is **any** criminal offence which is **perceived** by the **victim** or **any other person**, as being motivated by a **hostility** or **prejudice** based on

- Race
- Faith
- Disability
- Gender Identity
- Sexual orientation



Or perception of the victim having one of these “protected characteristics”.

Northumbria Police also record Hate **INCIDENTS** based on the same definition, but these incidents do not have a criminal element attached

# HOW to report a Hate Crime or Incident



## By telephone:

- In an emergency ALWAYS dial 999
- If you are not at immediate risk, call the Police on 101
- Reports can also be made to a third party reporting system called ARCH on 0800 323288



## Online:

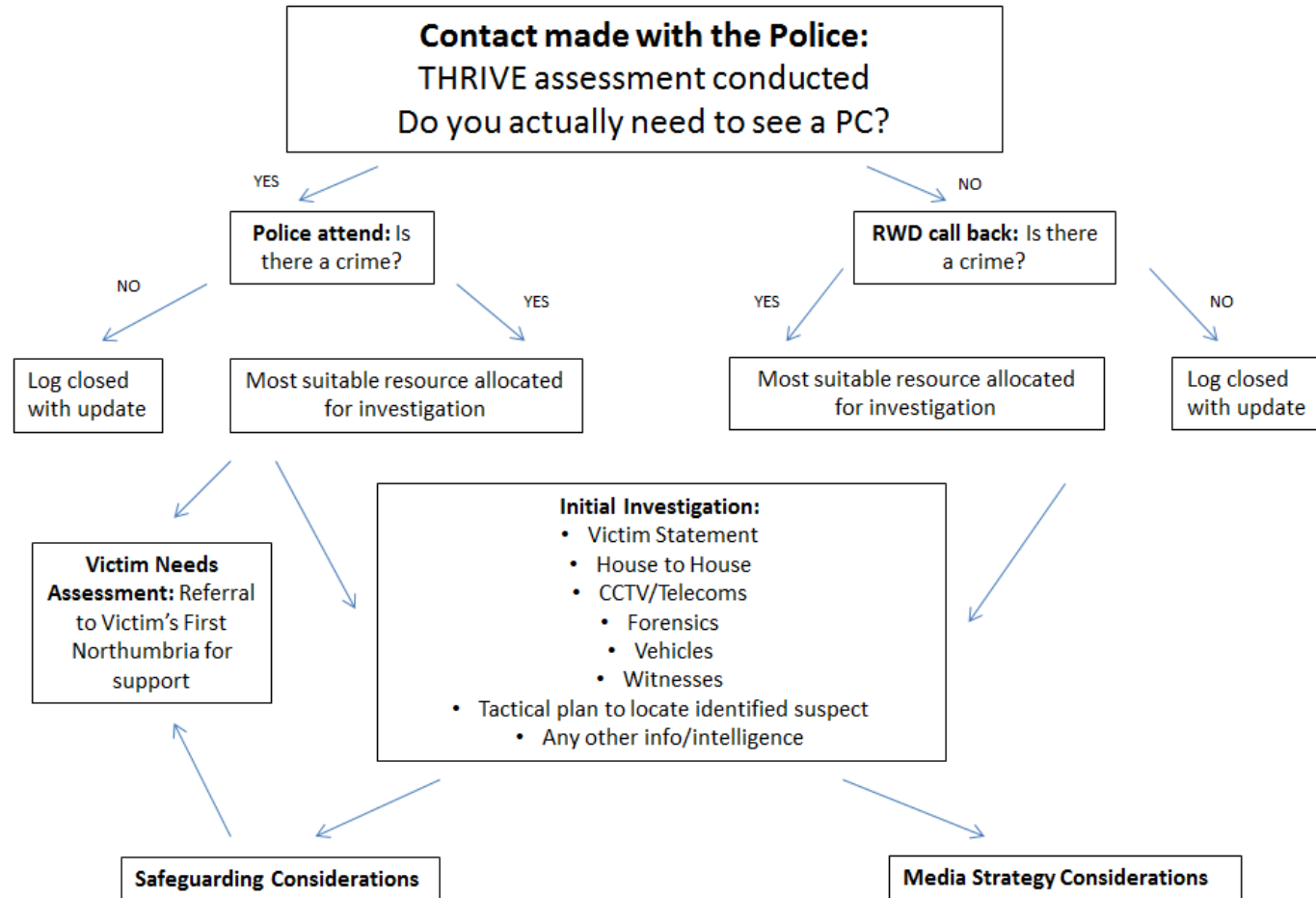
- Visit [www.northumbria.police.gov.uk](http://www.northumbria.police.gov.uk) and fill in the online form
- Visit [www.report-it.org.uk](http://www.report-it.org.uk) – this is True Vision a national third party reporting website



## In person:

- You can attend you local Police station and speak to an officer in person
- You can visit a Safe Reporting Centre – visit [www.northumbria.police.gov.uk](http://www.northumbria.police.gov.uk) for a full list of locations
- Speak to a third party support service such as Victim's First Northumbria

# What Happens Next?



# Newcastle/Gateshead: One of a Kind

Northumbria Police cover a huge area with many different needs. Policing in Newcastle and Gateshead however is unique and brings with it numerous challenges. We have:



**International airport**

**Metro Centre - largest shopping centre in Europe**

**Thriving LGBT community**

**Large student population: Newcastle/Northumbria**

**Universities and Newcastle / Gateshead Colleges**

**Large Jewish residential & academic community**

**Diverse ethnic and religious communities**





# National Award Winning Team!



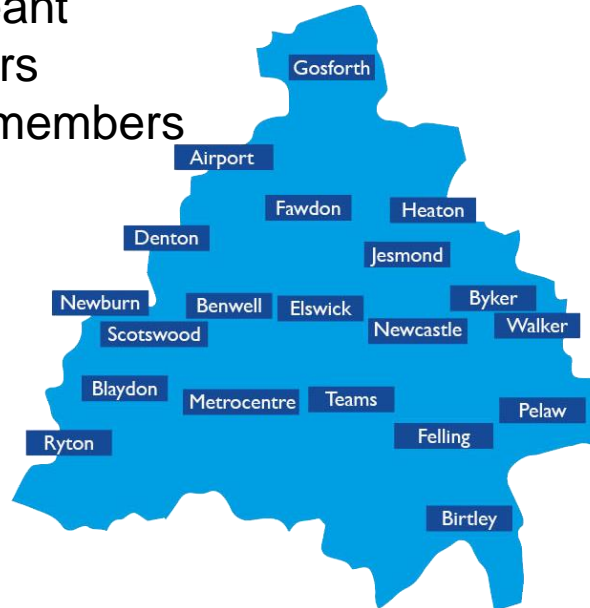
Law Enforcement Upstander Award  
October 2017

# Communities Engagement Team

Putting  
Victims  
First

## The Central Area Command CET

- 1 Police Sergeant
- 5 Police Officers
- 3 Police Staff members



- Responsible for Gateshead and Newcastle
- 144 elected councillors
- Two local government authority areas
- Population in excess of 500,000
- 99 square miles



# Central CET: Our Role

Putting  
Victims  
First

- Working in partnership with two local authority Community Safety Teams & the NPTs across Newcastle & Gateshead, as well as our Force Intelligence Bureau to identify changes in community tensions. Including:
  - ❑ **Local issues** - hate crime, ASB, protests
  - ❑ **National** - political, media, critical incidents
  - ❑ **International** – terrorism, politics
- Managing identified community tensions through a variety of means
- Monitoring Hate Crimes / Incidents across Newcastle & Gateshead – identifying patterns and offering enhanced and bespoke support to victims
- Attend community group sessions and provide a trusted link into uniformed Policing
- Education / Training sessions to partners and community groups
- Meeting with any agency or organisation that can improve our knowledge or service delivery

# Central CET: The Future

- We will continue to look for patterns in hate crime reporting – if there is a spike or a dip, we will communicate with partners to find out why and what more we can do
- We are looking to discover **why** people **DO** report hate crime – when we know this, we can develop our engagement methods to facilitate more reporting
- We are already planning this year's Hate Crime Conference after the huge success of the one held at Gateshead College in October 2017
- We are in the process of setting up a Youth Independent Advisory Group to help shape future policies and procedures – this is to link in with a project run by the National Hate Crime Lead, Paul Giovanni



# Central CET: The Future

- In conjunction with the Community Safety Team in Gateshead, we are developing an online National Knowledge Hub around Hate Crime – this will be available for Police Forces around the country, Local Authorities and third party organisations to ask questions and share best practice



- We have welcomed research students into the team to have direct access to our staff and systems – long may this continue! Areas of study have included:
  - The satisfaction gap between victims of ‘regular’ crime and those of hate crime
  - The impact of international events on reporting of hate crime

Research shows that the existence of teams such as the CET are unprecedented in other force areas – most forces don't even have one officer doing the work we do!

We also work internally to educate challenge, as well as advise best practice

We are in a unique position to offer an 'in' to charities and support organisation to shape Police policies and Procedures

We act as a 'safety net' to ensure that incidents of hate crime are suitable recorded and dealt with properly

We are happy to provide data and support for funding bids, as well as help with any training needs you may have.

The Central CET have a direct link to the National Hate Crime Lead who advises the Government and are able to promote the N.E

